

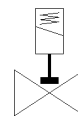
solenoid valve

VZWD-L-M22C-M-N14-25-V-1P4-22-R1

Part number: 1491898

FESTO

Directly actuated, NPT1/4" connection.



Data sheet

Feature	Value
Design structure	Directly actuated poppet valve
Type of actuation	electrical
Sealing principle	soft
Assembly position	Any
Mounting type	Line installation
Process valve connection	1/4 NPT
Electrical connection	Plug Cubic design to EN 175301-803 Plug pattern type A to EN 175301-803
Nominal size	2.5 mm
Valve function	2/2 closed, monostable
Manual override	None
Flow direction	non reversible
Medium	Compressed air in accordance with ISO8573-1:2010 [7:4:4] Inert gases Mineral oil Water Neutral fluids Other media on request
Nominal pressure of process valve	100
Differential pressure	0 bar
Characteristic coil data	24 V DC: 11 W
Insulation class	H
Permissible voltage fluctuation	+/- 10 %
Duty cycle	100 %
Type of reset	mechanical spring
Type of piloting	direct
Medium pressure	0 ... 22 bar
Max. viscosity	22 mm ² /s
Medium temperature	-10 ... 80 °C
Ambient temperature	-10 ... 35 °C
Leak rate in accordance with EN 12266-1	A
Flow rate Kv	0.16 m ³ /h
Standard nominal flow rate	170 l/min
Switching time on	20 ms
Switching time off	18 ms
Materials note	Contains PWIS substances Conforms to RoHS
Material housing	High alloy steel, non-corrosive
Material number for housing	1.4305
Material seals	FPM
Product weight	650 g
Protection class	IP65
Corrosion resistance classification CRC	3 - High corrosion stress